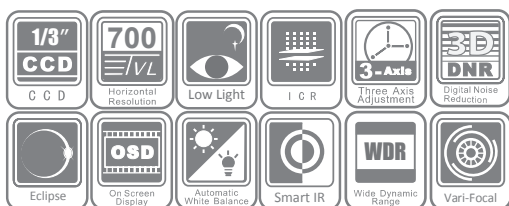


DS-2CC51A1/51A5/51A7P(N)-VF

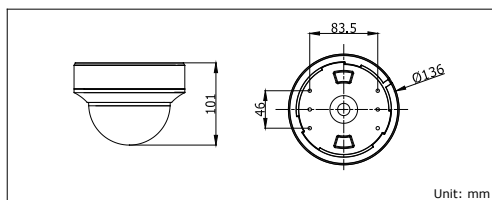
700 TVL Indoor Vari-focal Dome Camera



Key features

- 1/3" SONY CCD
- 700 TVL Horizontal Resolution
- Super Low Illumination
- 2.8-12mm Vari-focal Lens
- True Day/Night
- 75 dB Wide Dynamic Range (DS-2CC51A7P(N)-VF)
- OSD Menu, DNR, Smart IR, Eclipse

Dimensions



Accessories



	DS-2CC51A1P(N)-VF	DS-2CC51A5P(N)-VF	DS-2CC51A7P(N)-VF
Camera			
Image Sensor	1/3" SONY CCD		
Signal System	PAL/NTSC		
Effective Pixels	PAL: 976 (H) × 582 (V), NTSC: 976 (H) × 494 (V)		
Min. Illumination	Color: 0.001 Lux @ (F1.2, AGC ON), 0.0001 Lux @ (F1.2, AGC ON, sensitivity × 512) B/W: 0.0001 Lux @ (F1.2, AGC ON) Color: 0.0014 Lux @ (F1.4, AGC ON), 0.00014 Lux @ (F1.4, AGC ON) B/W: 0.00014 Lux @ (F1.4, AGC ON)	Color: 0.001 Lux @ (F1.2, AGC ON), 0.0001 Lux @ (F1.2, AGC ON, sensitivity × 512) B/W: 0.0001 Lux @ (F1.2, AGC ON), 0.00001 Lux @ (F1.2, AGC ON, sensitivity × 512) Color: 0.0014 Lux @ (F1.4, AGC ON), 0.00014 Lux @ (F1.4, AGC ON, sensitivity × 512) B/W: 0.00014 Lux @ (F1.4, AGC ON), 0.000014 Lux @ (F1.4, AGC ON, sensitivity × 512)	Color: 0.001 Lux @ (F1.2, AGC ON), 0.0001 Lux @ (F1.2, AGC ON, sensitivity × 512) B/W: 0.0001 Lux @ (F1.2, AGC ON), 0.00001 Lux @ (F1.2, AGC ON, sensitivity × 512) Color: 0.0014 Lux @ (F1.4, AGC ON), 0.00014 Lux @ (F1.4, AGC ON, sensitivity × 512) B/W: 0.00014 Lux @ (F1.4, AGC ON), 0.000014 Lux @ (F1.4, AGC ON, sensitivity × 512)
Shutter speed	PAL: 1/50 s to 1/100,000 s, NTSC: 1/60 s to 1/100,000 s		
Lens	2.8 - 12 mm @ F1.4 Angle of view: 80° - 27.2°		
Lens Mount	φ14		
Auto Iris	DC drive		
Angle Adjustment	Pan: 0 - 355°, Tilt: 0 - 180°, Rotation: 0 - 355°		
Day & Night	IR cut filter with auto switch		
Horizontal Resolution	700 TVL		
Synchronization	Internal/Power synchronization		
Video Output	1Vp-p composite output (75 Ω/BNC) Test monitor out [1Vp-p composite output (75 Ω/BNC), device line]		
S/N Ratio	More than 62 dB		
Menu			
Camera ID	On/Off (52 letters, position adjustable)	On/Off (16 letters, position adjustable)	On/Off (16 letters, position adjustable)
Auto Gain	-	Low/Middle/High/Off	Low/Middle/High/Off
D/N Mode	Auto /Day/Night		
White Balance	ATW/PUSH/USER1/USER2/ ANTI CR/MANUAL/PUSH LOCK	Auto trace WB1/Auto trace WB2/Manual/Auto Control	Auto trace WB1/Auto trace WB2/Manual/Auto Control
Privacy Masking	On/Off, maximum 8 zones	On/Off, maximum 12 zones	On/Off, maximum 12 zones
Motion Detection	On/Off		
Back Light	BLC/HLC/Off	Area/Value/Off	Area/Value/Off
WDR	-	-	Value/ Contrast / WD exposure compensation/ Return
Anti-Flicker	-	On/Off	On/Off
Language	Chinese/ English/ Japanese/ German/ French/ Russian/ Portuguese/ Spanish	English/Chinese	English/Chinese
Function	ATR, HLC, DNR, Sharpness, Brightness, Contrast, Hue, Gain, Mirror, Defect Pixel Correction	SMART IR, Digital Wide Dynamic Range, Eclipse, Digital Noise Reduction, Sharpness, Brightness, Saturation, Resolution, Electronic image stabilization, Digital Zoom, Mirror, Defect Pixel Correction, auto-iris correction	SMART IR, Eclipse, Digital Noise Reduction, Sharpness, Brightness, Saturation, Resolution, Electronic image stabilization, Digital Zoom, Mirror, Defect Pixel Correction, auto-iris correction
Scene	-	Indoor Standard , Indoor Backlight , Outdoor, Low illumination , IR Standard , Customize	Indoor Standard , Indoor Backlight , Outdoor, Low illumination , Customize, IR Standard
General			
Working Temperature/Humidity	-10 °C - 60 °C (14 °F - 140 °F) Humidity 90% or less (non-condensing)		
Power Supply	24 V AC ± 10%, 12 V DC ± 10%		
Power Consumption	Max. 4 W (Max. 4.5 W with IR cut filter on)		
Dimensions	Φ 136 × 101 mm (Φ 5.35" × 3.98")		
Weight	800 g (1.76 lbs)		

Available models

PAL: DS-2CC51A1P-VF, DS-2CC51A5P-VF, DS-2CC51A7P-VF,
NTSC: DS-2CC51A1N-VF, DS-2CC51A5N-VF, DS-2CC51A7N-VF